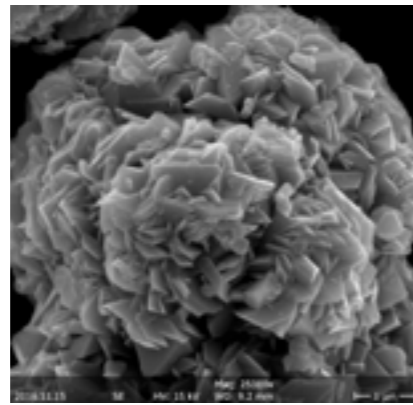
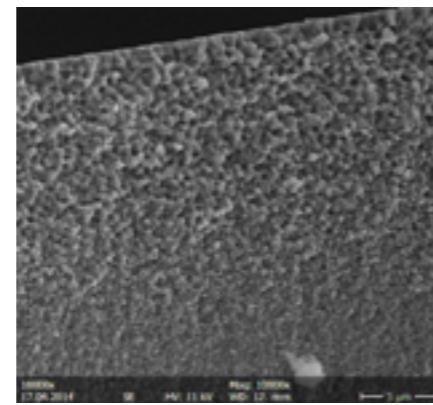


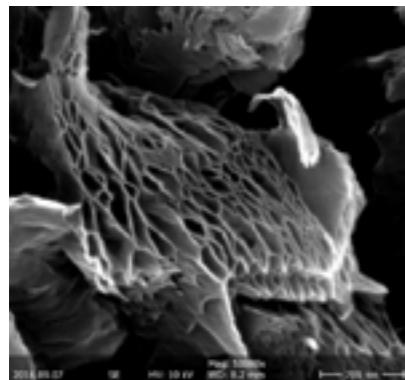
蓝宝石 Sapphire



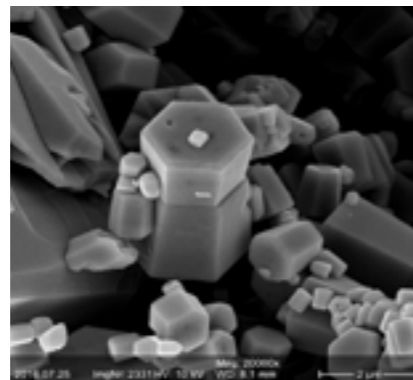
镍氢电池材料 Ni-Mh Battery



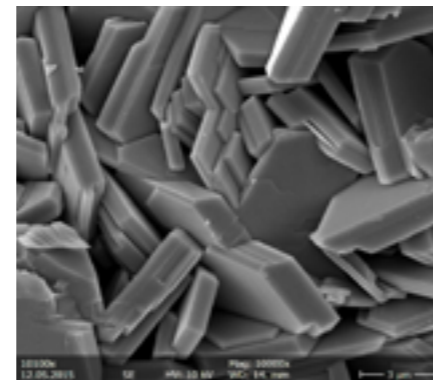
软磁合金 Magnetically Soft Alloy



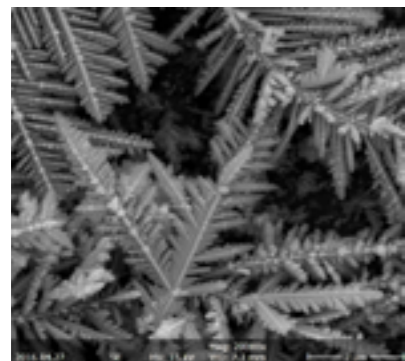
石墨烯 GrapheneOxide



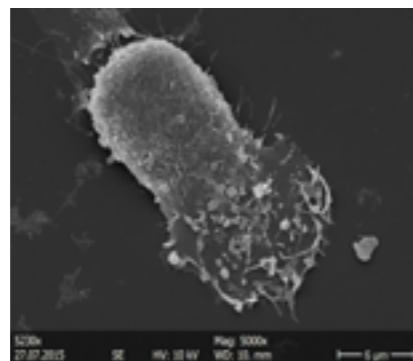
催化剂 Catalyst



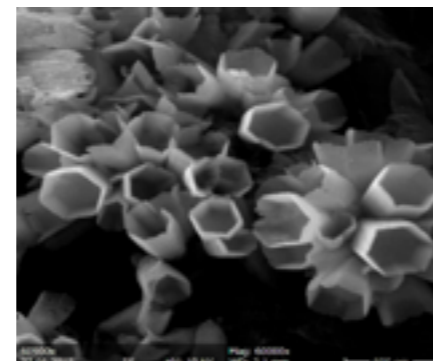
陶瓷 Ceramics



硝酸银 Argentum Nitricum

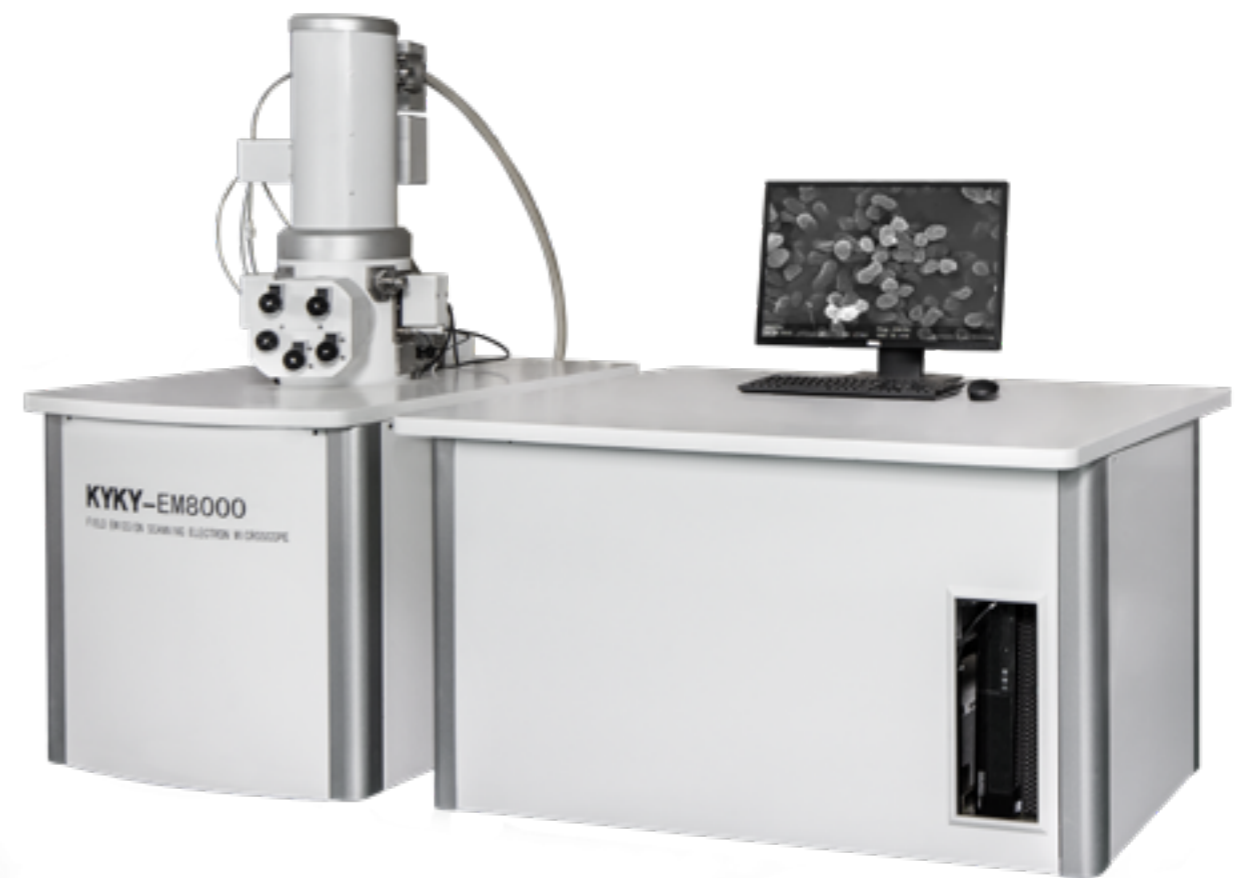


细胞 Cell



氧化锆 ZrO

中科科仪产品系列之
扫描电子显微镜



KYKYSEM 助您探索无限微观世界！

KYKY 北京中科科仪股份有限公司
KYKY TECHNOLOGY CO., LTD.



地址: 北京市海淀区中关村北二条13号 邮编: 100190

电话: 010-62571593

咨询热线: 18611455335 18611455343

传真: 010-62555306

网址: www.kyky.com.cn

邮箱: kykysem@kyky.com.cn

北京中科科仪股份有限公司
KYKY TECHNOLOGY CO.,LTD

EM8000 高分辨率热场发射扫描电镜

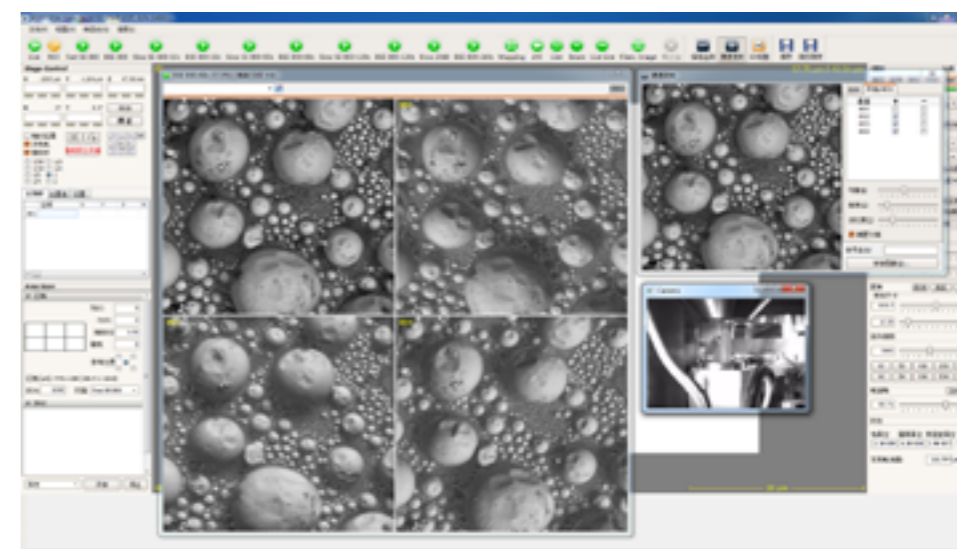
项目/Name	KYKY-EM8000性能参数			
分辨率/Resolution	1.5nm@15kV(SE) 3nm@30kV(BSE)			
放大倍数/Magnification	底片放大: 8X~80000X Displayed Magnification: Magnification is defined with a display size 127mm*211mm			
电子枪类型/Electron Gun Type	肖特基场发射电子枪 Schottky Field Emission Electron Gun			
加速电压/Accelerating Voltage	0 ~ 30kV			
自动调整功能/Auto Function	聚焦、亮度/对比度、消像散、电子束对中等 Focus, Bright/Contrast, Stigmator, Beam Alignment etc			
真空系统/Vacuum System	2个离子泵、1个涡轮分子泵、1个机械泵 2 Ion Pump, 1TMP, 1RP			
探测器/Detector	高真空二次电子探测器 (具备保护探测器探头不被碰撞的功能) Ultra Vacuum Secondary Electron Detector (With detector protection function)			
样品台/Sample Stage	手动样品台 (标配)	五轴全自动预对中样品台 (选配)		
	Standard Manual Stage	Option Motorized Eucentric Stage		
行程/Movement	X	0 ~ 80mm	0~80mm	0~150mm
	Y	0 ~ 60mm	0~50mm	0~150mm
	Z	0 ~ 50mm	0~30mm	0~60mm
	R	360 °	360 °	360 °
	T	-5 ° ~ 90 °	-5 ° ~ 70 °	-5 ° ~ 70 °
最大样品直径/Max Sample Diameter	175mm	175mm	340mm	
最大样品高度/Max Sample Height	40mm	20mm	50mm	
选配探测器/Optional Detector	BSE\EDS\EBSD\CL			
选配件/Optional Accessories	预抽室\EBL\高低温台\纳米操作台\拉伸台\手控盒\轨迹球 Pre-Vacuum Chamber/EBL/Cryo Stage/Nano Manipulator/Tensile Stage/ Control Panel/Track Ball			

软件介绍 Software Introduction

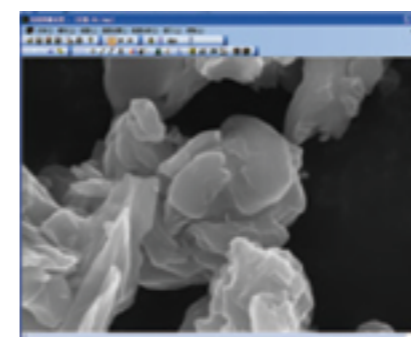
KYKY-SEM电镜操作软件纯中文/英文 可切换操作界面, 模块化布局。EM8000 软件支持实时5图像同时显示, 4通道外加CCD窗口, 支持二次电子像与背散射电子像合成, 多点尺寸测量, 电镜图片文字标注, 真空图显示, CCD窗口显示等强大的辅助功能, 满足不同用户的个性化需求。

自动功能: 自动灯丝, 高压, 聚焦, 亮度/对比度调节, 消像散, 电子束对中等, 故障检测, 选配3D重构等。

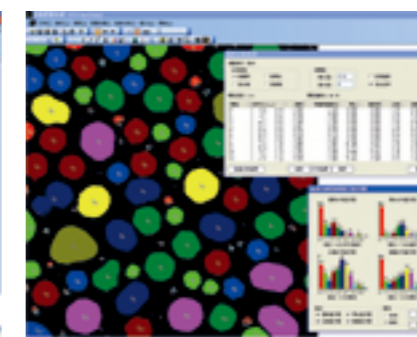
可保存图片: 16384 x 16384 Pixel BMP, GIF, TIF, JPG, MNG, ICO, CUR, TGA, PCX, JP2, JPC, PGX, RAS, PNM, SKA, SEM.



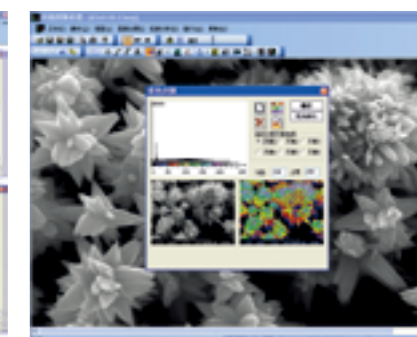
图像处理软件 Image Processing Software



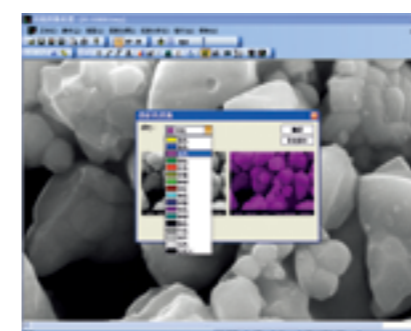
操作界面 Operation Interface



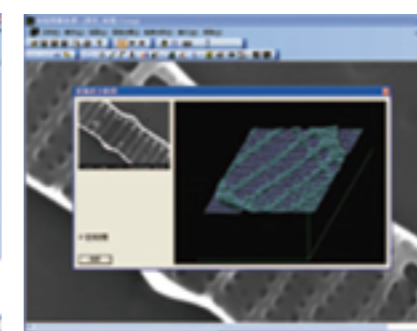
粒度分析 Grain Size Analysis



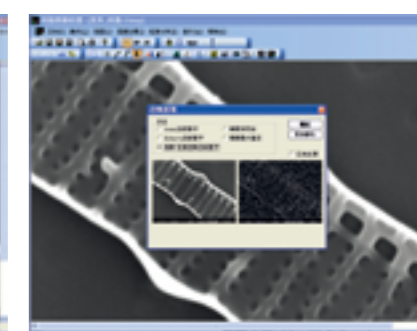
彩色分割 Color Segmentation



伪彩变换 Pseudo-color Transform



面强度分析 Surface Intensity Analysis



边缘提取 Edge Extraction