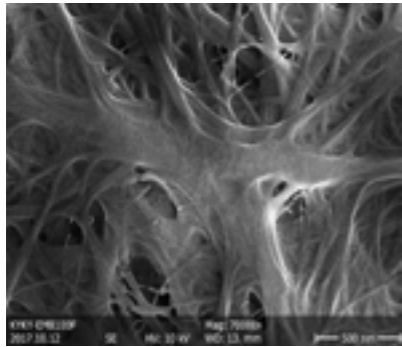
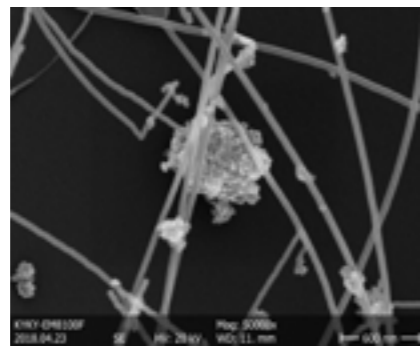


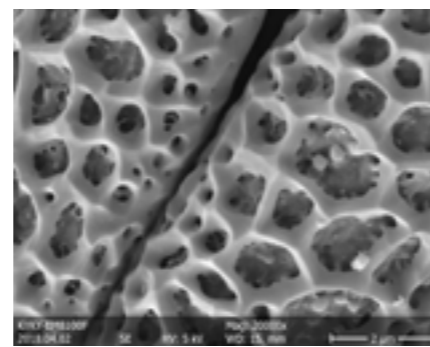
测样图片 Gallery



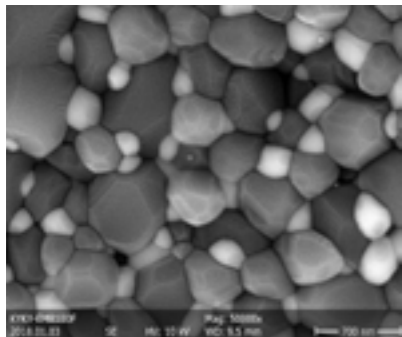
电池隔膜 Diaphragm



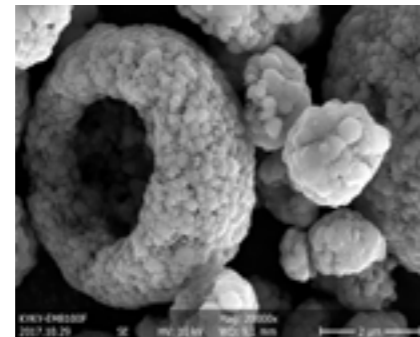
碳纳米笼 Carbon Nanocages



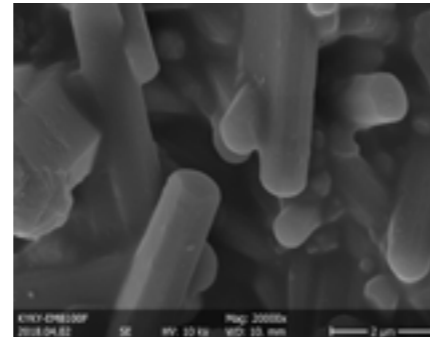
孢子 Spore



氧化铝截面 Aluminium Oxide Section

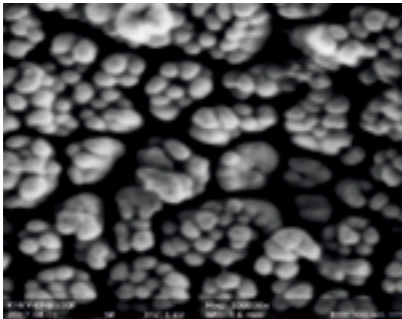


钴粉 Cobalt Powder

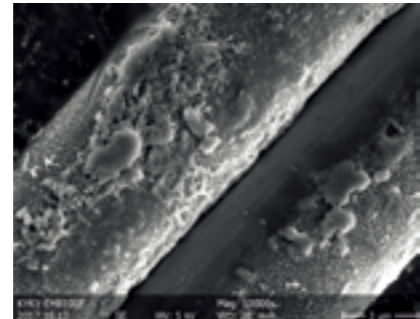


氮化硅 Silicon Nitride

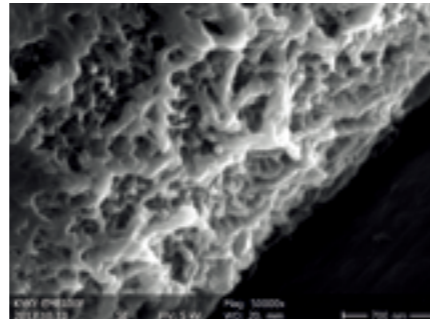
低压图片 Low Voltage Image



碳喷金 Carbon after sputtering gold



纳米纤维 Nanofiber



纤维表面 Fiber Surface

KYKY 北京中科科仪股份有限公司
KYKY TECHNOLOGY CO., LTD.



地址: 北京市海淀区中关村北二条13号 邮编: 100190

电话: 010-62571593

咨询热线: 18611455335 18611455343

传真: 010-62555306

网址: www.kyky.com.cn

邮箱: kykysem@kyky.com.cn

KYKY
中科科仪

中科科仪产品系列之
扫描电子显微镜



KYKYSEM 助您探索无限微观世界!

北京中科科仪股份有限公司
KYKY TECHNOLOGY CO.,LTD

EM8100 高分辨率热场发射扫描电镜

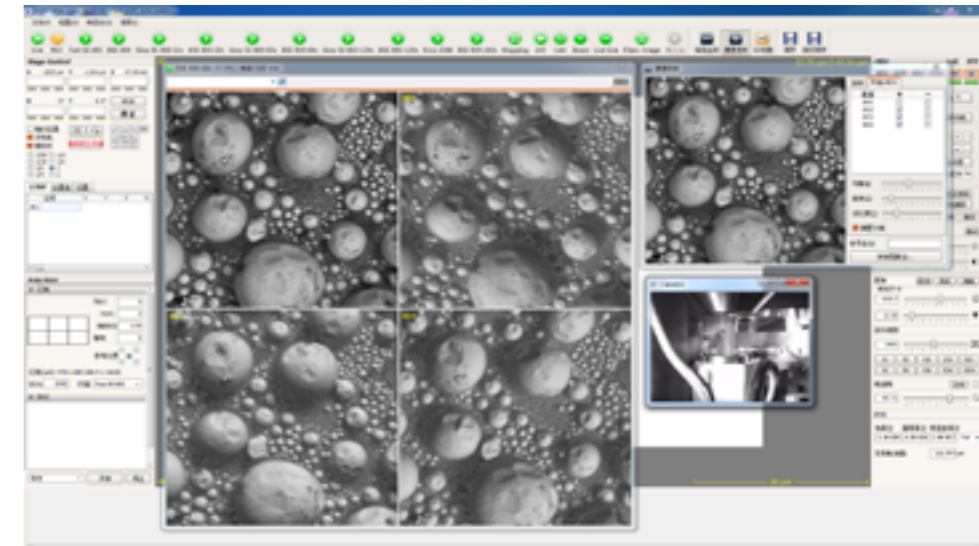
项目/Name	KYKY-EM8100性能参数	
分辨率/Resolution	1nm@30kV(SE) 3nm@1kV (SE) 2.5nm@30kV(BSE)	
放大倍数/Magnification	底片放大：6X~1000000X Displayed Magnification: Magnification is defined with a display size 127mm*211mm	
电子枪类型/Electron Gun Type	肖特基场发射电子枪 Schotty Field Emission Electron Gun	
加速电压/Accelerating Voltage	0 ~ 30kV	
自动调整功能/Auto Function	聚焦、亮度/对比度、消像散、电子束对中等 Focus, Bright/Contrast, Stigmator, Alignment etc	
真空系统/Vacuum System	1个离子泵、1个吸气剂离子复合泵、1个分子泵和1个机械泵 Fully Automatic: 1 Ion Pump, 1 Combined Pump (Getter pump & Ion pump), 1 TMP, 1 RP	
探测器/Detector	高真空二次电子探测器 (具备保护探测器探头不被碰撞的功能) Ultra Vacuum Secondary Electron Detector (With detector protection function)	
样品台/Sample Stage	五轴全自动预对中样品台/Five Axes Eccentric Motorized Stage	
行程/Movement	X	0~150mm
	Y	0~150mm
	Z	0~60mm
	R	360 °
	T	-5 ° ~70 °
最大样品直径/Max Sample Diameter	340mm	
选配探测器/Optional Detector	BSE\EDS\EBSD\CL	
选配件/Optional Accessories	预抽室\EBL\高低温台\纳米操作台\拉伸台\手控盒\轨迹球 Pre-Vacuum Chamber\EBL\Cryo Stage\Nano Manipulator/Tensile Stage/ Control Panel/Track Ball	

软件介绍 Software Introduction

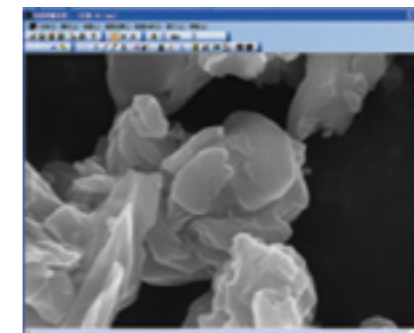
KYKY-SEM电镜操作软件纯中文/英文 可切换操作界面，模块化布局。EM8100 软件支持实时5图像同时显示，4通道外加CCD窗口，支持二次电子像与背散射电子像的合成，多点尺寸测量，电镜图片文字标注，真空图显示，CCD窗口显示等强大的辅助功能，满足不同用户的个性化需求。

自动功能：自动灯丝，高压，聚焦，亮度/对比度调节，消像散，电子束对中，电子枪自动校正，故障检测，选配3D重构等。

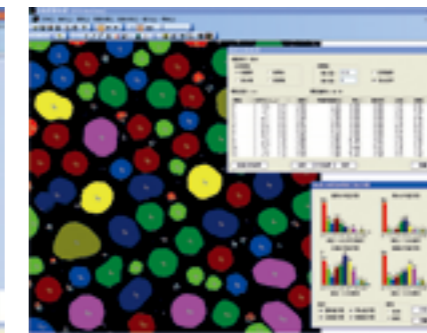
可保存图片：16384 x 16384 Pixel BMP, GIF, TIF, JPG, MNG, ICO, CUR, TGA, PCX, JP2, JPC, PGX, RAS, PNM, SKA, SEM.



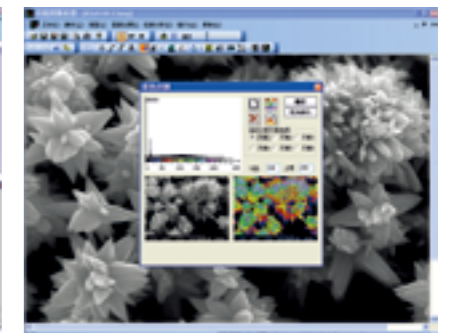
图像处理软件 Image Processing Software



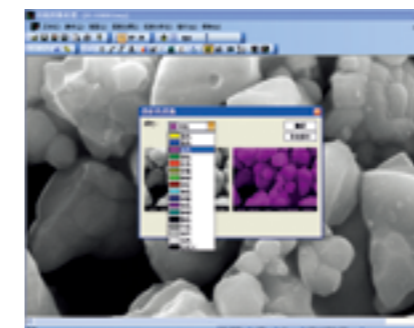
操作界面 Operation Interface



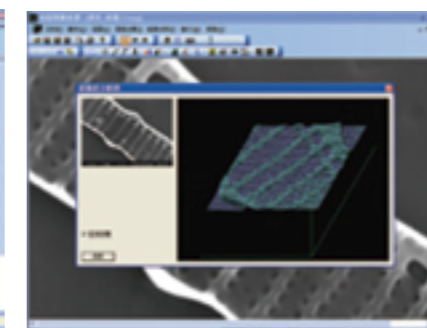
粒度分析 Grain Size Analysis



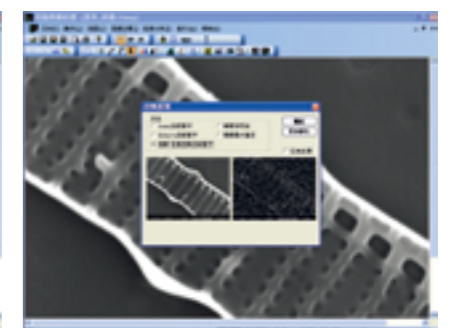
彩色分割 Color Segmentation



伪彩变换 Pseudo-color Transform



面强度分析 Surface Intensity Analysis



边缘提取 Edge Extraction